

PRO GROW 630 W & 680 W
SAMSUNG LM301H White
OSRAM 660 nm Hyper Red
Top Bin Diodes

**SAMSUNG
OSRAM**

PRO GROW

INDUSTRY LEADING PERFORMANCE

Pro Grow LED grow lighting systems deliver powerful, full spectrum, high performance with long lifespan and energy savings for commercial & hobby growers.

LED PRODUCT CATALOGUE



INTRODUCING

Pro Grow range of LED's utilise industry leading diodes, coupled with reliable electronics to deliver horticultural LED lighting solutions that outperform the competition in quality light output, end product yield and purchase price.



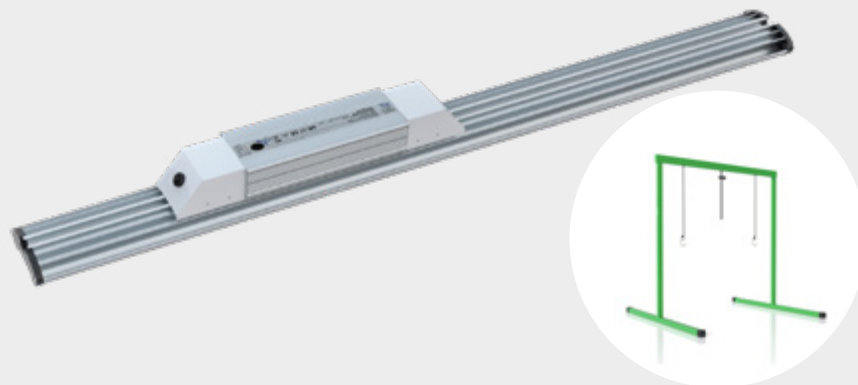
CONTENTS

60 W Single Bar	04
100 W & 200 W UFO	06
300 W & 500 W UFO	08
630 W 6 Bar	10
680 W 8 Bar	12
820 W LED Solar	14
Smart Controller	16
LED Growing Tips	18
PPFD User Guide	19

60 W Single Bar

LED Model X

140 $\mu\text{mol/s}$ PPFD
2.4 $\mu\text{mol/J}$
Philips 6,500K Blue
Sosen Driver
Weight 1.3 kg
Dimensions 58 x 6 x 6 cm

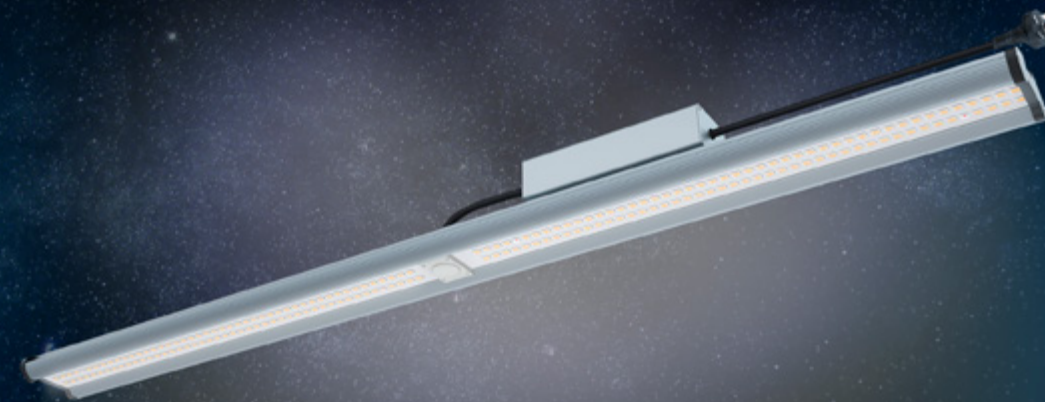


Optional Stand
66 L x 46 W x 67 cm H

AMPERAGE @240 V

AMPERAGE @240 V	
60 W	0.25 A

Vegetative Horticultural Light



LED - MODEL X

PRO GROW
INDUSTRY LEADING PERFORMANCE



100 W & 200 W UFO

100 W UFO

210 $\mu\text{mol/s}$ PPFD

2.1 $\mu\text{mol/J}$

Input power: 100 W

Weight: 3 kg

Dimensions: 28 \varnothing x 11.5 cm High

200 W UFO

420 $\mu\text{mol/s}$ PPFD

2.1 $\mu\text{mol/J}$

Input power: 200 W

Weight: 4 kg

Dimensions: 40 \varnothing x 12.5 cm High



AMPERAGE @240 V	
100 W	0.42 A
200 W	0.83 A



Save

Energy-efficient LED technology lowers energy usage.



Easy

- Plug & Play.
- Set & Forget.



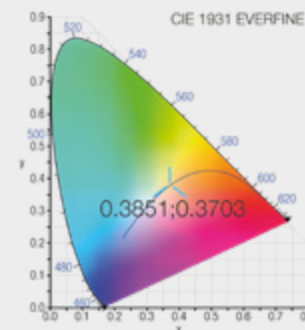
Quiet

No cooling fan required



Versatile

Full spectrum grow & bloom horticultural lighting from one fixture.



Full Spectrum Horticultural Light



100 W



200 W

PRO GROW
INDUSTRY LEADING PERFORMANCE



300 W & 500 W UFO

300 W UFO

620 $\mu\text{mol/s}$ PPFD

2.1 $\mu\text{mol/J}$

Input power: 300 W

Weight: 6 kg

Dimensions: 40 \varnothing x 16.5 cm High

500 W UFO

1050 $\mu\text{mol/s}$ PPFD

2.1 $\mu\text{mol/J}$

Input power: 500 W

Weight: 7 kg

Dimensions: 45 \varnothing x 23 cm High



Solid Suspension System

AMPERAGE @240 V

300 W	1.25 A
500 W	2.08 A



Save

Energy-efficient LED technology lowers energy usage.



Easy

- Plug & Play.
- Set & Forget.



Quiet

No cooling fan required



Versatile

Full spectrum grow & bloom horticultural lighting from one fixture.

Full Spectrum Horticultural Light



PRO GROW
INDUSTRY LEADING PERFORMANCE



630 W 6 Bar

LED Model S 630 W 6 Bar

1,720 $\mu\text{mol/s}$ PPFD

2.73 $\mu\text{mol/J}$

Full Spectrum

Samsung LM301H White

Osram 660 nm Hyper Red

Inventronics Driver

Weight 16.5 kg

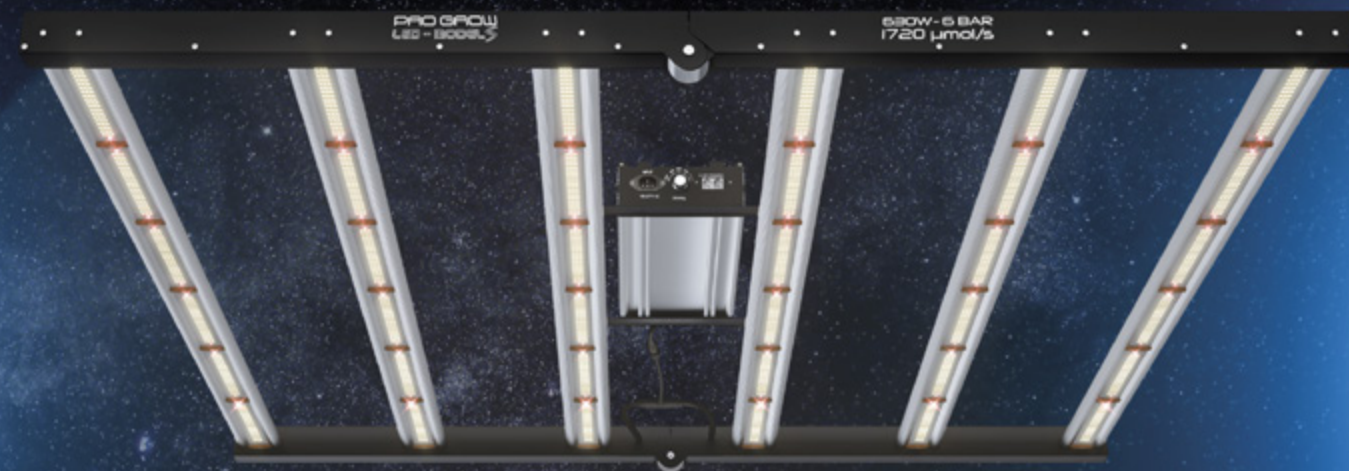
Dimensions: 116 x 106 x 11.5 cm
(with ballast attached)



AMPERAGE @240 V

630 W	2.62 A
-------	--------

Full Spectrum Horticultural Light



LED - MODEL S

PRO GROW
INDUSTRY LEADING PERFORMANCE



680 W 8 Bar

LED Model E 680 W 8 Bar

1,950 $\mu\text{mol/s}$ PPFD

2.85 $\mu\text{mol/J}$

Full Spectrum

Samsung LM301H White

Osram 660 nm Hyper Red

Inventronics Driver

Weight: 19.2 kg

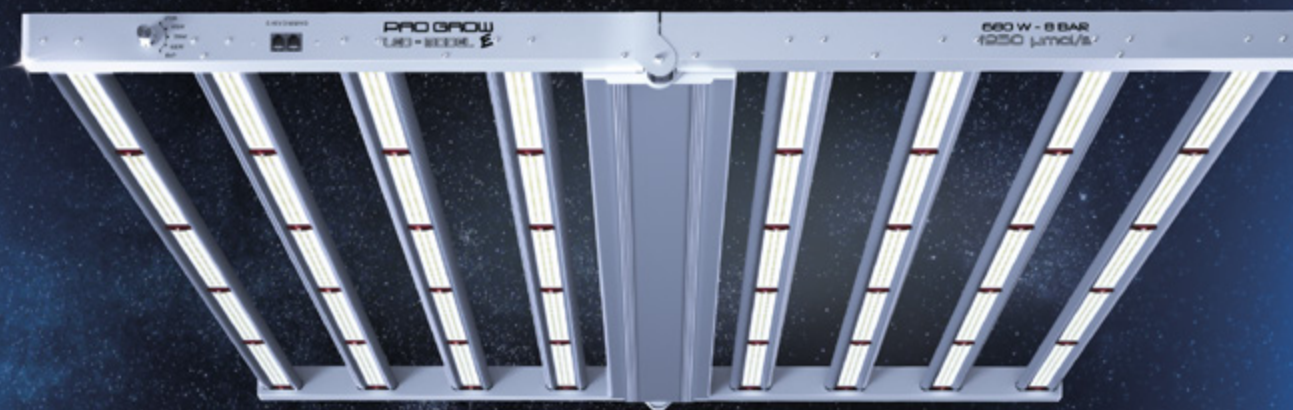
Dimensions: 116 x 112 x 5 cm



AMPERAGE @240 V

680 W	2.83 A
-------	--------

Full Spectrum Horticultural Light



LED - MODEL E

PRO GROW
INDUSTRY LEADING PERFORMANCE



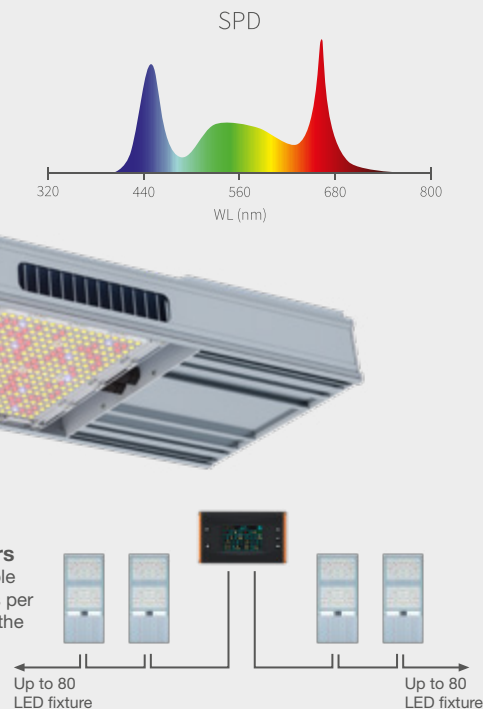
820 W Solar

LED Solar 820 W

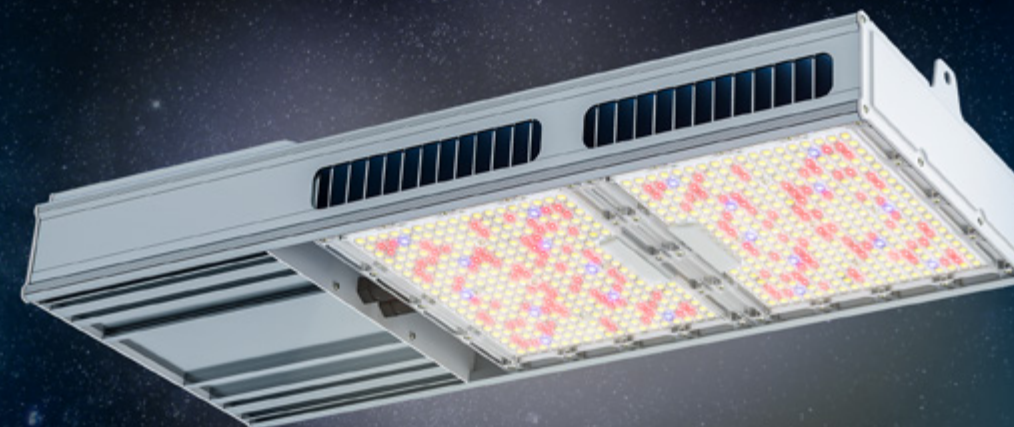
2,000 $\mu\text{mol/s}$ PPFD
2.5 $\mu\text{mol/J}$
Seoul 5050 White
Led-star Blue
Osram 660 nm Hyper Red
Inventronics Drivers
Weight 12.5 kg
Dimensions 74 x 30 x 9 cm

AMPERAGE @240 V	
820 W	3.42 A
AMPERAGE @415 V	
820 W	1.98 A

Compatible with 0-10V Controllers
It is equipped with an external RJ14 cable and allows for installation of 160 fixtures per controller port by simply daisy chaining the fixtures.



Full Spectrum Horticultural Light



LED - SOLAR

LED Smart Controller



Control up to:
100 x Model S
100 x Model E
160 x Solar 820 W
via RJ-14 connection.



On/ Off Timing



Sunrise & Sunset



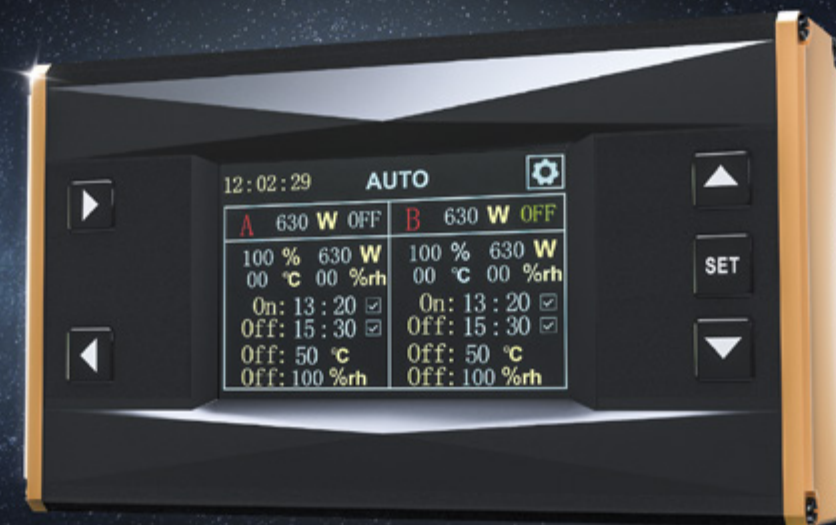
Temperature
& Humidity



Touch Screen



The new GEN 2 Controller



PRO GROW
INDUSTRY LEADING PERFORMANCE

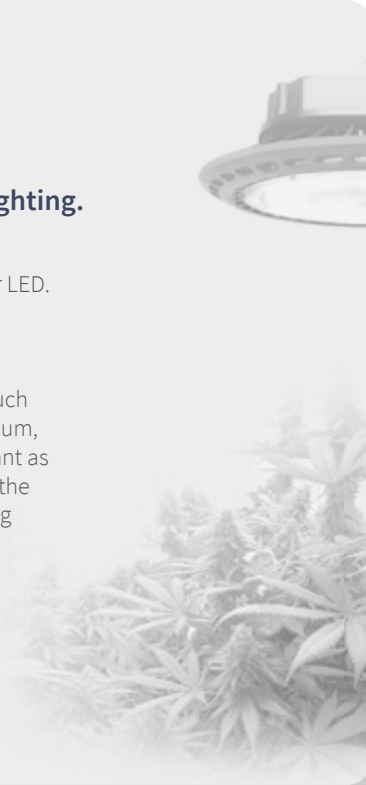


LED Growing Tips

Pro Grow LED's offer full spectrum, high colour rendering index, horticultural lighting.

- High light requirement plants need a minimum of 500 W/sq.m of either LED or HID lighting.
- Pro Grow 100 & 200 W are suitable for supplementary or under canopy lighting.
- Pro Grow 300, 500, 630 & 680 W are stand alone, grow & bloom fixtures.
- LED energy savings are achieved by reducing the heat load of indoor growing areas, requiring less air movement or HVAC.
- LED grown plants may require additional heating in cold climates. The plant root zone can be heated in low ambient temperatures.

- Less heat equals less watering required. Be careful to not overwater plants grown under LED.
- Follow the PPFD User Guide for correct LED placement at various stages of growth.
- LED grow lights provide the light energy for photosynthesis. Other environmental factors such as room temperature, airflow, circulation, medium, nutrients and plant genetics are just as important as the light source. Don't focus on a single part of the growing process, understanding how everything is interconnected will ensure your success.



Pro Grow LED - PPFD Guide (μmol/m²/s)								
LED FIXTURE	60 W 1 Bar	100 W UFO	200 W UFO	300 W UFO	500 W UFO	630 W 6 Bar	680 W 8 Bar	820 W Solar
Total PPF	140 μmol/s	210 μmol/s	420 μmol/s	620 μmol/s	1050 μmol/s	1720 μmol/s	1950 μmol/s	2000 μmol/s
PPF Efficacy	2.4 μmol/J	2.1 μmol/J	2.1 μmol/J	2.1 μmol/J	2.1 μmol/J	2.73 μmol/J	2.85 μmol/J	2.5 μmol/J
Kelvin	6.5K	4K	4K	4K	4K	4K	4K	5K
CRI	90	90	90	90	90	91.8	91.8	81.5
Coverage	0.5 m²	0.5 m²	0.75 m²	1m²	1.2 m²	1.5 m²	1.5 m²	1.5 m²
Output PPFD (μmol/m²/s)	250 @ 30 cm	342 @ 30 cm	730 @ 30 cm	1250 @ 30 cm	1297 @ 40 cm	985 @ 30 cm	1150 @ 40 cm	1436 @ 90 cm

STAGE Required μmol		Recommended Height Of LED Fixture Above The Canopy @ 100% Intensity						
Clones	75 - 125	40 - 60 cm	95 cm	110 cm	120 cm	150 cm	150 cm	160 cm
Mother Plants	400 - 600	-	20-15 cm	30-45 cm	80-65 cm	110-90 cm	110-60 cm	115-85 cm

GROWTH CYCLE								
Early Vegetative	125 - 200	45-30 cm	75-55 cm	100-90 cm	110-100 cm	130-90 cm	130-120 cm	150-130 cm
Late Vegetative	200 - 300	30-20 cm	55-35 cm	90-75 cm	100-85 cm	120-110 cm	120-110 cm	130-115 cm

FLOWERING CYCLE								
Week 1	300 - 400	-	45-30 cm	80-70 cm	90-80 cm	110-105 cm	110-105 cm	125-115 cm
Week 2	400 - 500	-	35-20 cm	75-55 cm	80-70 cm	110-100 cm	105-80 cm	115-95 cm
Week 3	500 - 600	-	20-15 cm	55-45 cm	70-65 cm	100-90 cm	80-65 cm	95-85 cm
Week 4	600 - 700	-	10 cm	45-35 cm	65-55 cm	90-70 cm	65-55 cm	85-70 cm
Week 5	700 - 750	-	-	35-30 cm	55 cm	70-65 cm	55 cm	70 cm
Week 6	750 - 850	-	-	30-25 cm	55-50 cm	65-60 cm	50-45 cm	65-60 cm
Week 7-9	900+	-	-	20 cm	45 cm	55 cm	40 cm	55 cm





PRO GROW

INDUSTRY LEADING PERFORMANCE



WHOLESALE HORTICULTURAL GROUP Pty Ltd
3 Legacy Rd, Epping Vic 3076 Australia
sales@whg.net.au